



Engineering, Design and Technology at the service of nature

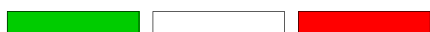


“THE BRIDGE”

Catalog of photovoltaic roofs

2013

Engineering Design Technologies



Italian Style



anMura
TECHNIQUE PERFECTION



@nnitor group
Technique Works Since 1989





ENDETECH

Our history

Charging stations

ROOFS

CLASSIC

Story

Roman

Gothic

MODERN

Luxi

Light

Party

Mediterraneo

Art Dèco

Utopia

Hector

FUTURE

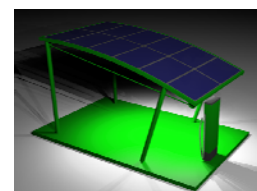
Plaza

TENSO STRUCURE

Vela

Tenso Star

Delta





La nostra storia

EnDeTech, part of Annitor Group, in addition to ongoing research and innovation on alternative energy sources, pays great attention to the development of the Green Mobility.

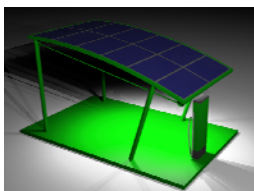
The goal is to integrate renewable energy to electric vehicles, and create a capillaries infrastructures in the area.

Endetech adapts for Individuals, Companies and Public Administrations providing turnkey products and services designed to meet the needs of different clients.

The charging station for electrical photovoltaic vehicles are entirely designed and built by EnDeTech, created by the perfect combination of technology (photovoltaic roofing system, energy storage, charging column) opens a new scenario on how to move.

EnDeTech, thanks to partnerships with leading companies in the production of charging stations, offers an innovative product and quality.

Engineering, Design and Technology, are the key to our success.



The Bridge

INTRODUZIONE

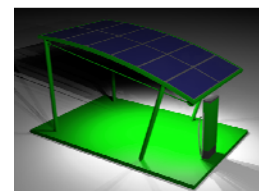


EnDeTech is proud to present the line of charging stations for electric vehicles, "The Bridge".

With three different stylistic periods, CLASSICAL, MODERN and FUTURE, EnDeTech offers a wide variety and amount of coverage to meet the diverse needs of its customers.

The Bridge The line is characterized by a series of covers with Italian design that represents the ideal combination of photovoltaic generators and energy storage that blend into the urban context and city private parking lots.

The catalog concludes him with the unpublished and innovative coverage in tenso it structures "Vela", from the original design in true style "En.De.Tech. "



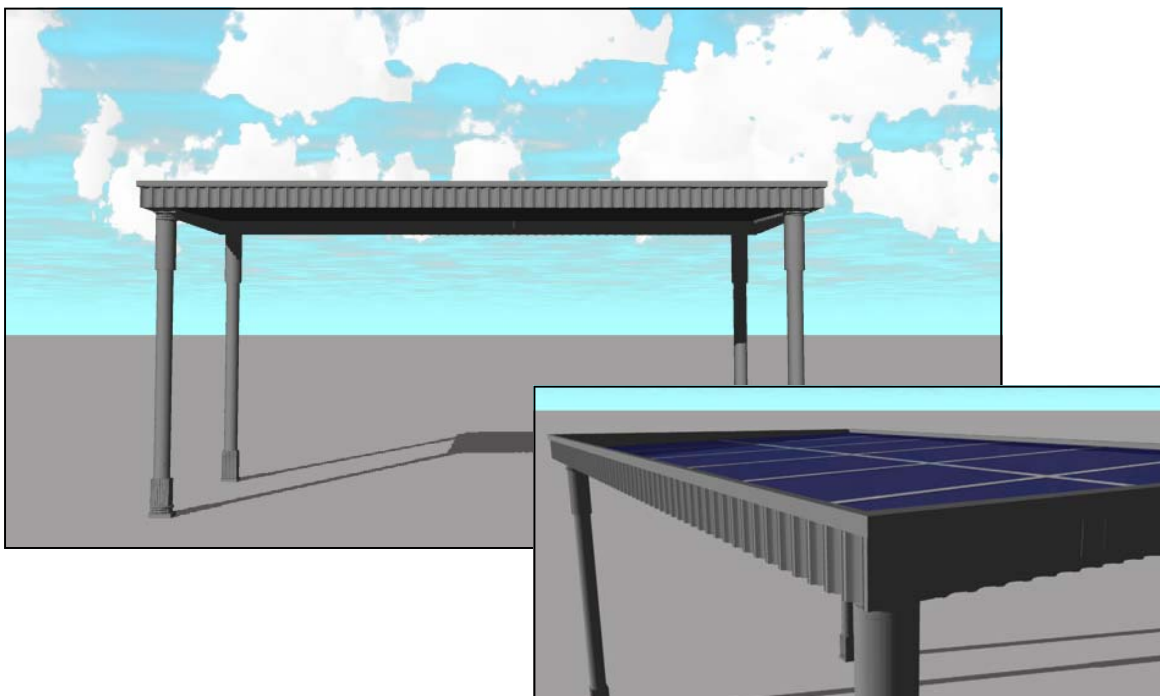


CLASSICAL

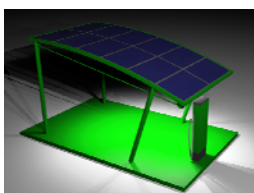
CLASSICAL

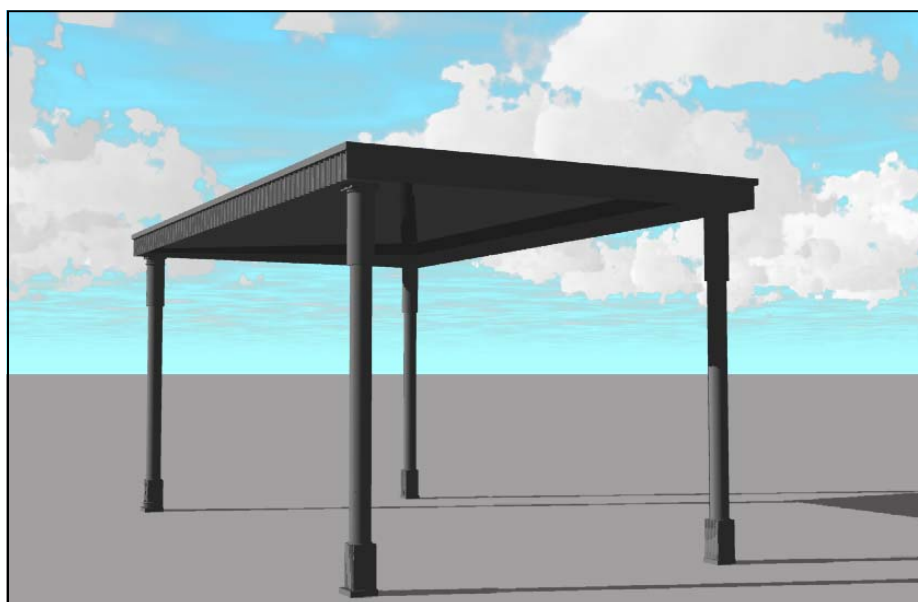
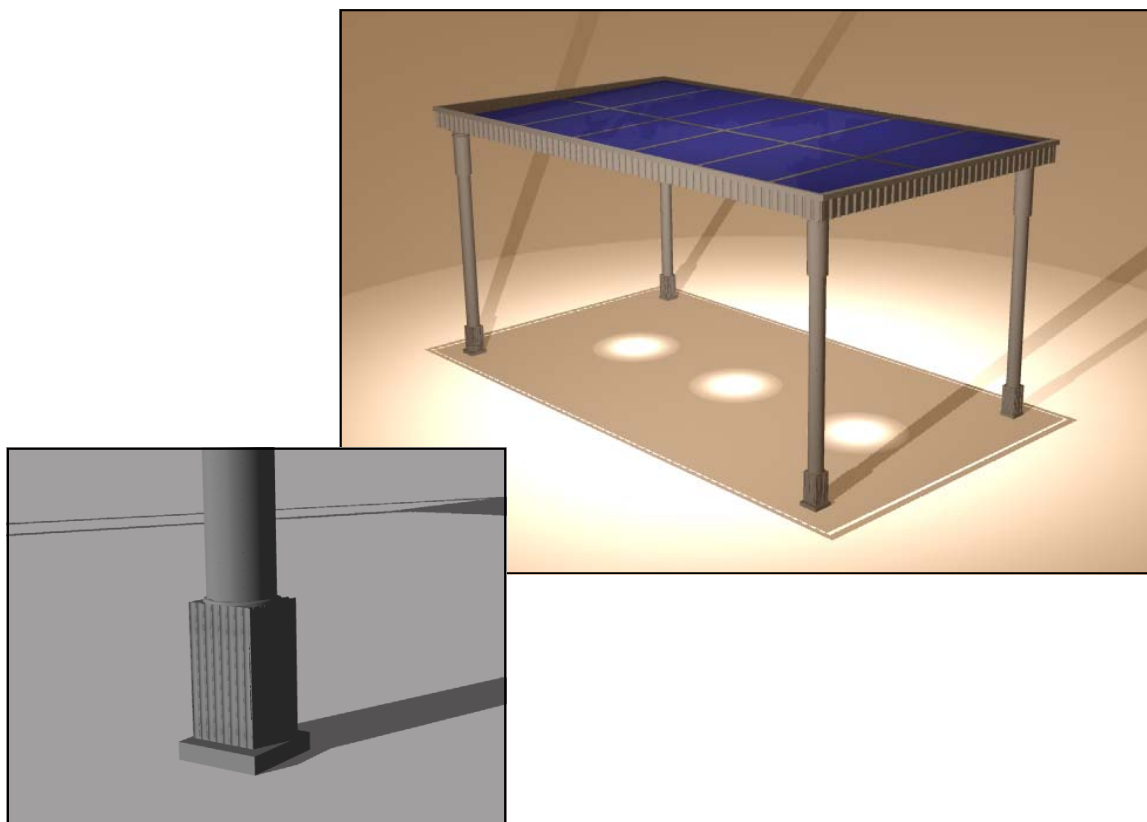
En.De.Tech with the style CLASSICAL proposes some coverages that are inserted with harmony and without stylistic interference with the buildings of the historical centers of the European cities. Besides, in all the solutions of the line CLASSICAL, the forms fotovoltaicis result boxed on a frame perimeter with the purpose to exclude the sight of the forms FV to an observer set on the plain road.

Available in three versions Story, Roman and Gothic.

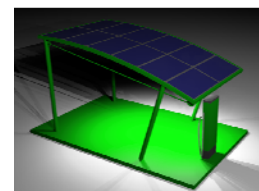


Coverage with forms PV to disappearance.





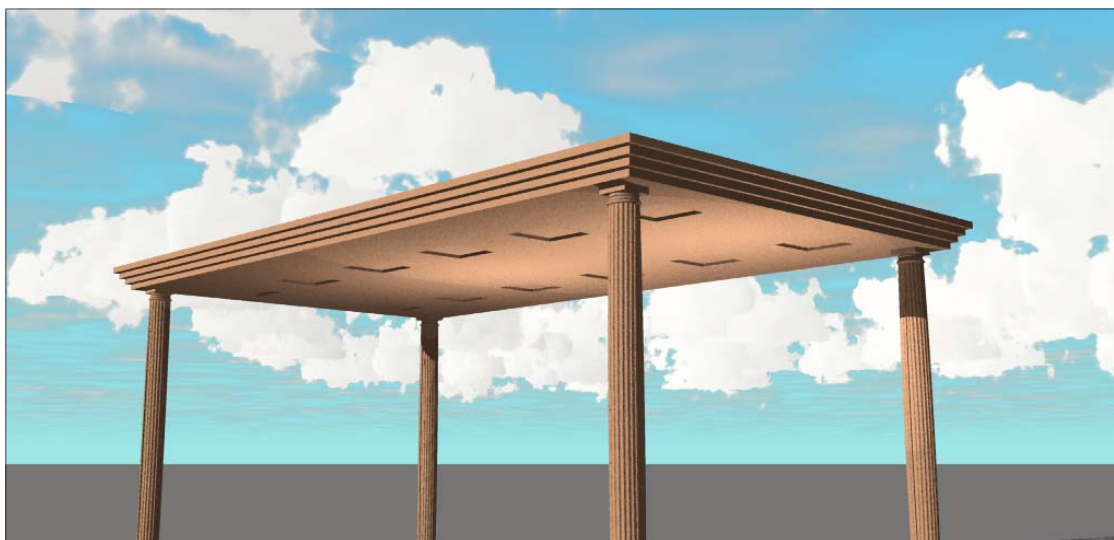
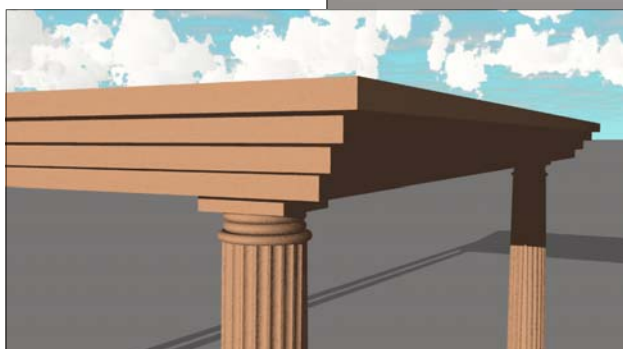
Code	Dimensions[m]	Materials	N° of FV panels	Power plant FV [kwp]
EnDeTech-13-001-P01	6,00x3,52x2,50	galvanized steel	12	2,76-3,00



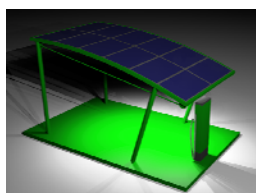


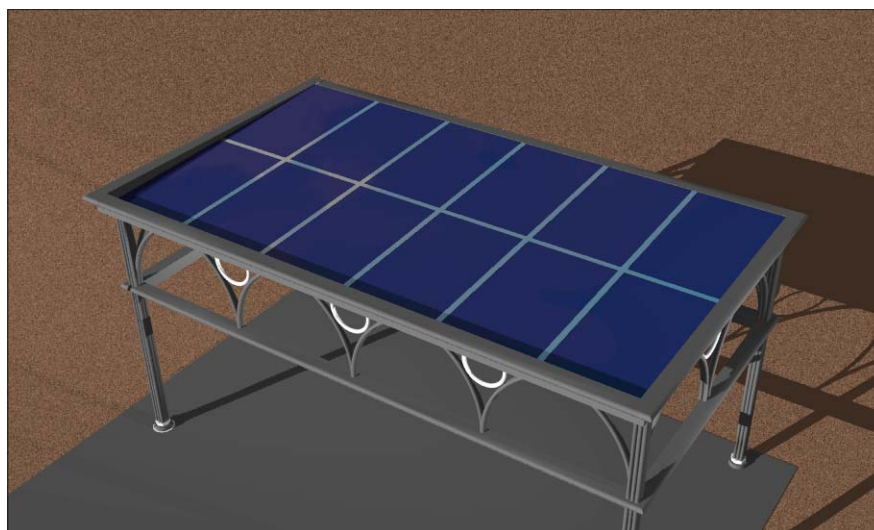
CLASSICAL

Roman

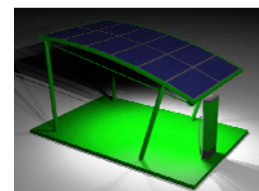


Code	Dimensions[m]	Materials	N° of FV panels	Power plant FV [kwp]
EnDeTech-13-001-P02	6,00x3,52x3,00	galvanized steel	12	2,76-3,00





Code	Dimensions[m]	Materials	Modulare	N° of FV panels	Power plant FV [kwp]
EnDeTech-13-001-P03	6,07x3,62x3,15	galvanized steel	Si	12	2,76-3,00





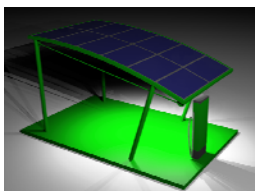
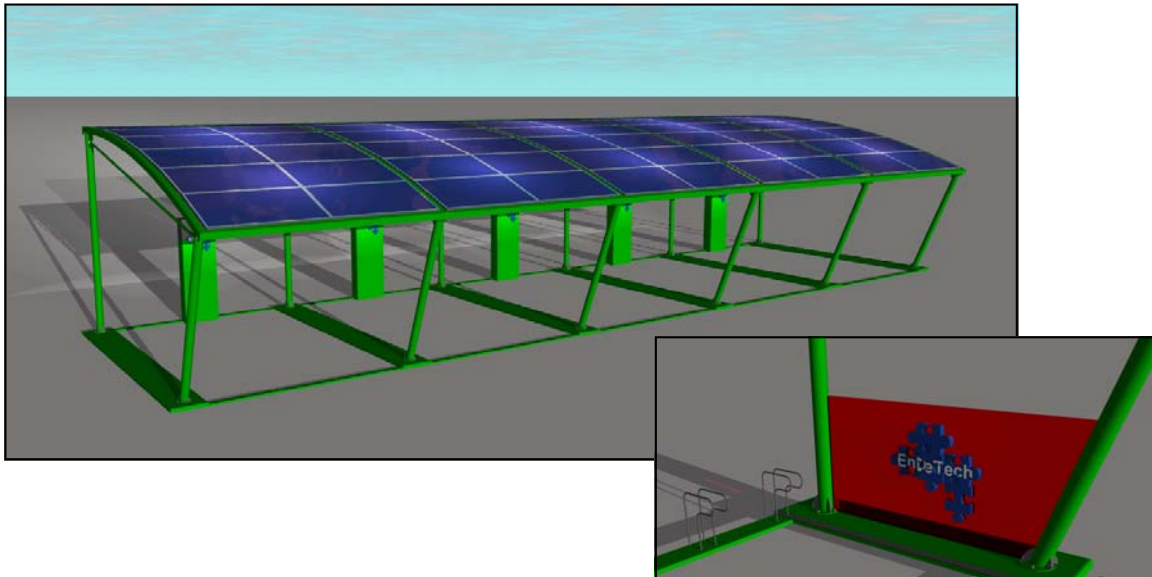
MODERN

MODERN

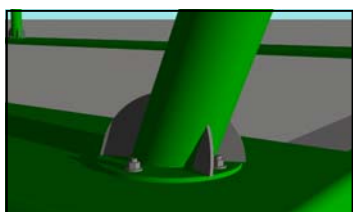
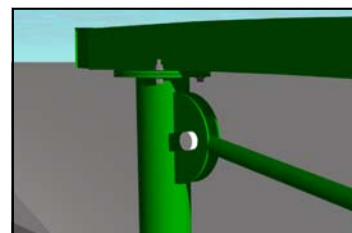
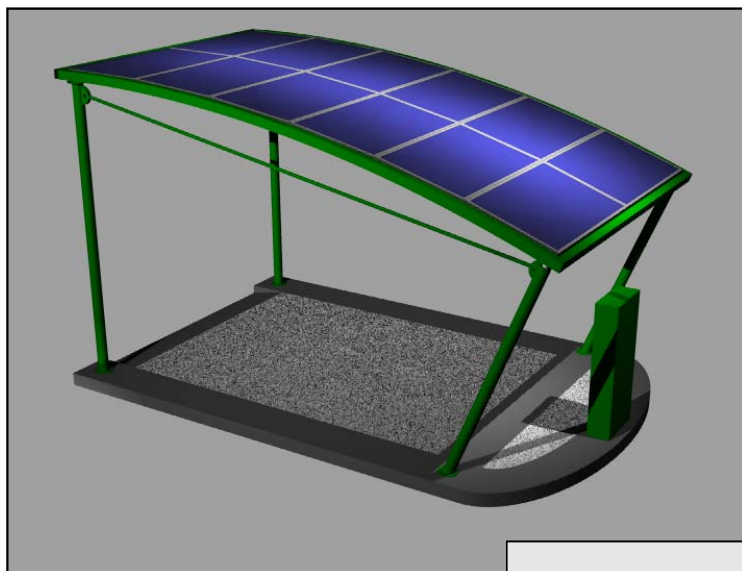
The style of MODER, new and innovative, it represents in full the politics of En.De.Tech.

MODERN proposes an ample range of coverages for the different demands, with a lot of solutions for the parking lot auto motion and bike.

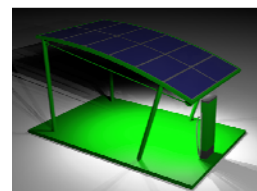
All the structures of the line MODERN are modular, in fact it are possible to unite the coverages sharing the intermediary pillars. Thanks to the modularity the coverages can also be realized for ample parking lot or for pedestrian islands getting a notable flexibility and adaptation both of the coverages and is of the systems PV to them connected.



Lux car



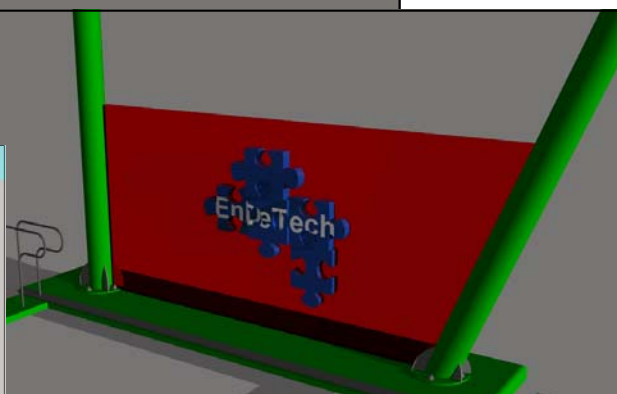
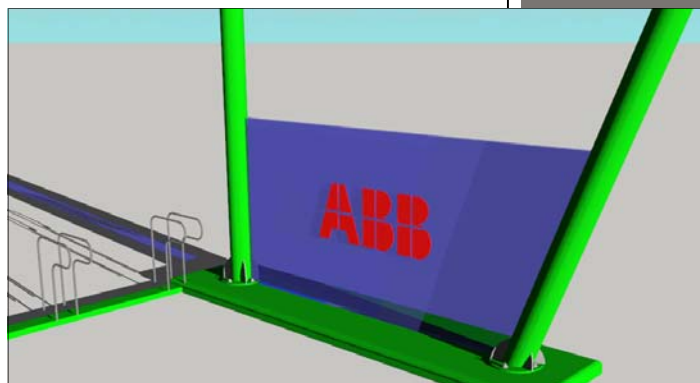
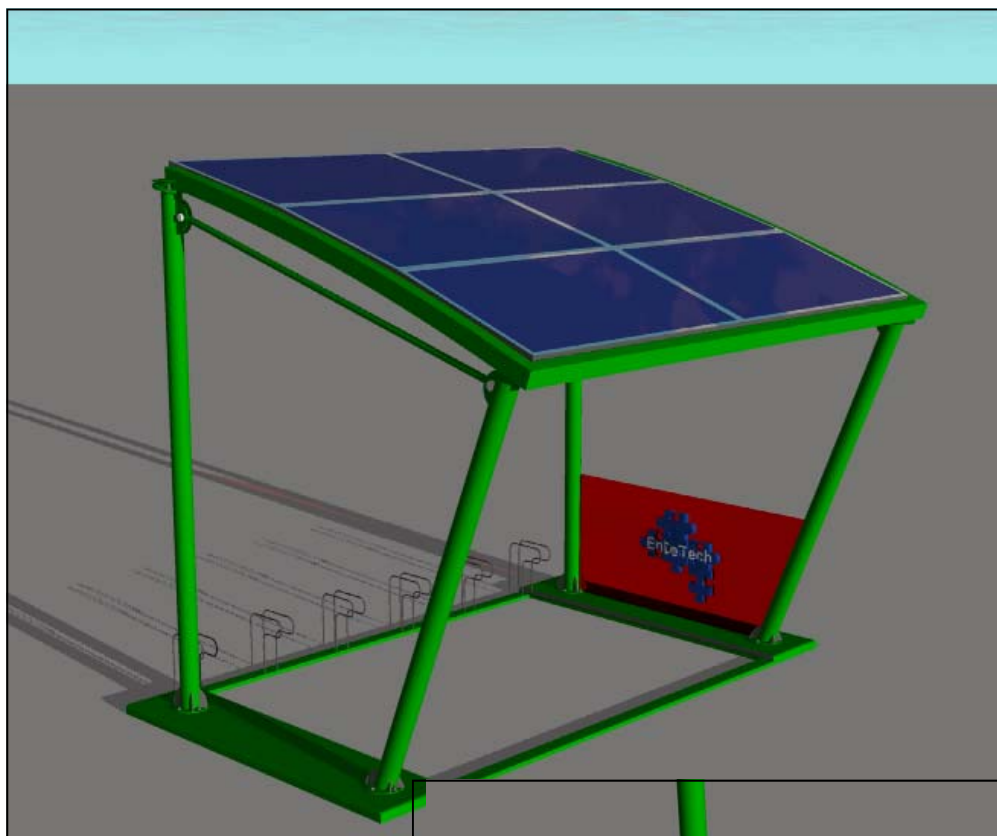
Code	Dimensions[m]	Materials	Modulate	N° of FV panels	Power plant FV [kwp]
EnDeTech-13-001-P04	6,00x3,52x2,50	galvanized steel	Si	12	2,76-3,00



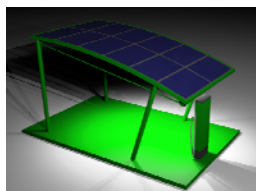


MODERN

Lux bike e motorcycle

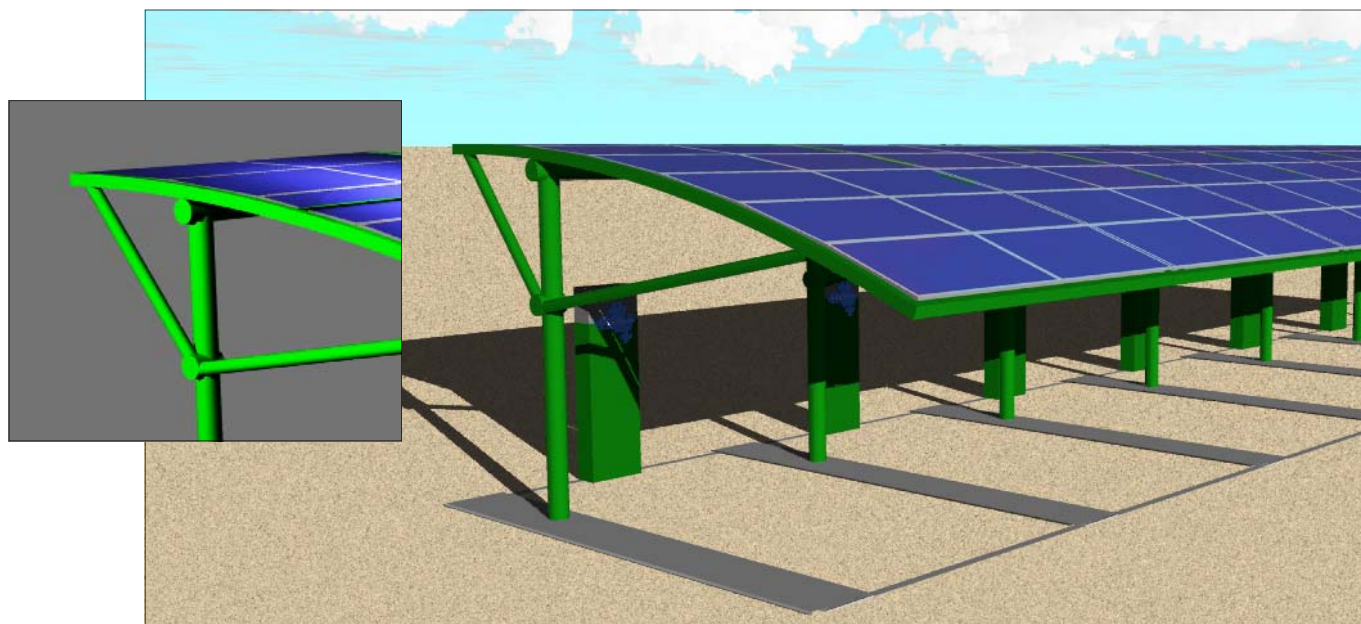
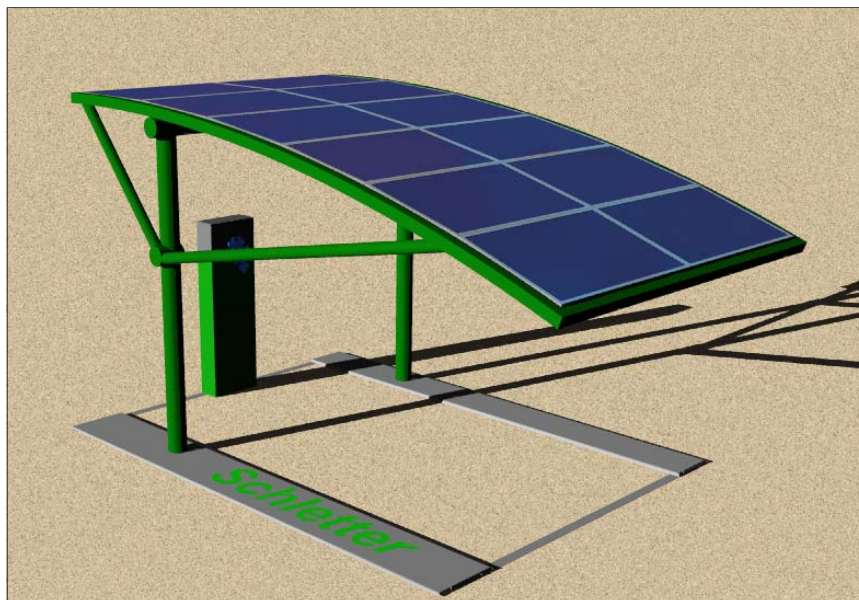


Code	Dimensions[m]	Materials	Modulate	N° of FV panels	Power plant FV [kwp]
EnDeTech-13-001-P05	3,04x3,52x2,50	galvanized steel	Si	6	2,76-3,00

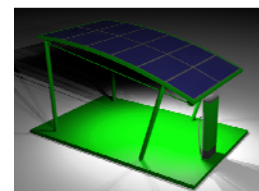


Light car

MODERN



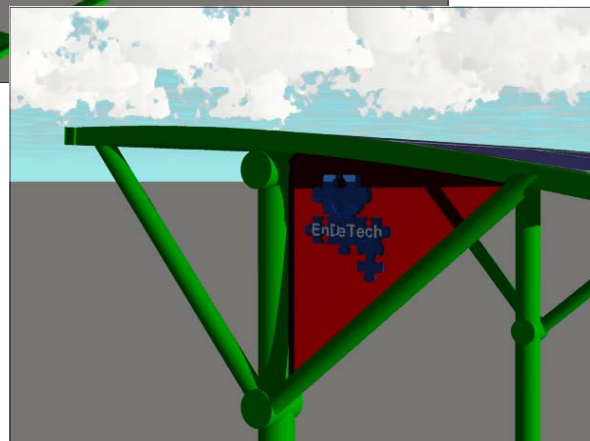
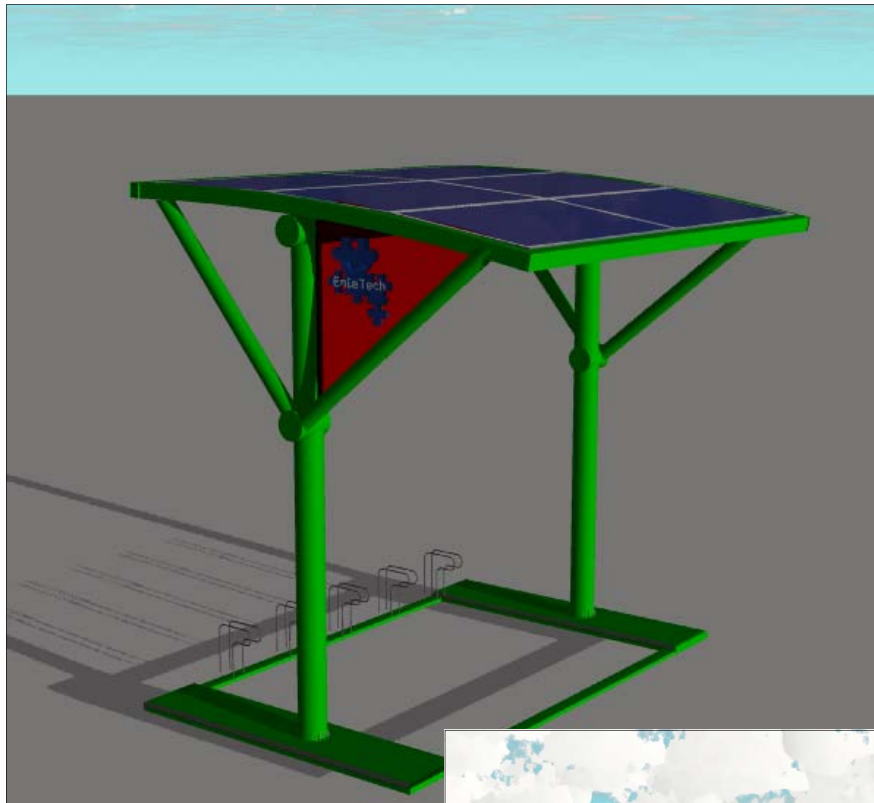
Code	Dimensions[m]	Materials	Modulate	N° of FV panels	Power plant FV [kw]
EnDeTech-13-001-P06	6,00x3,52x2,50	galvanized steel	Si	12	2,76-3,00



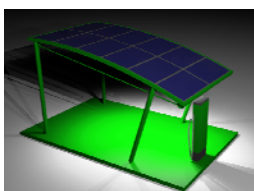


MODERN

Light bike e motorcycle

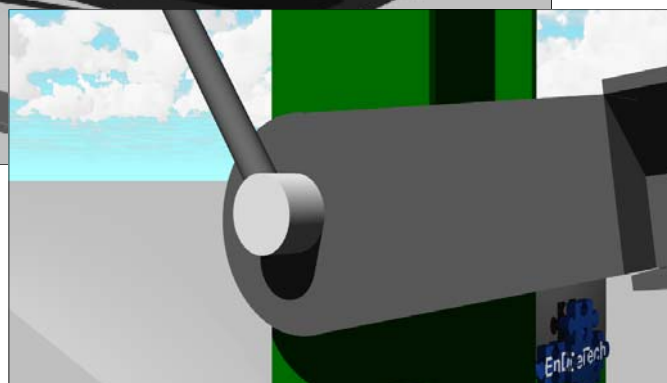


Code	Dimensions[m]	Materials	Modulate	N° of FV panels	Power plant FV [kwp]
EnDeTech-13-001-P07	3,04x3,52x2,50	galvanized steel	Si	6	2,76-3,00

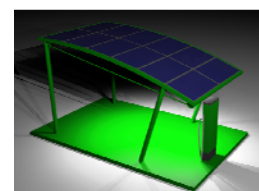


Party car

MODERN



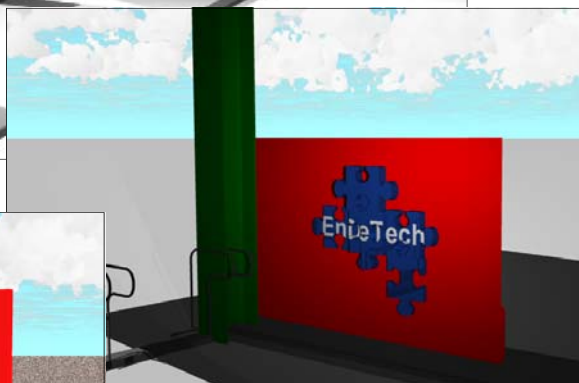
Code	Dimensions[m]	Materials	Modulate	N° of FV panels	Power plant FV [kwp]
EnDeTech-13-001-P08	6,00x3,52x2,50	galvanized steel	Si	12	2,76-3,00



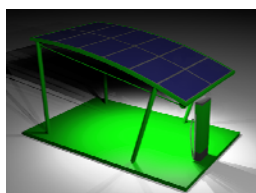


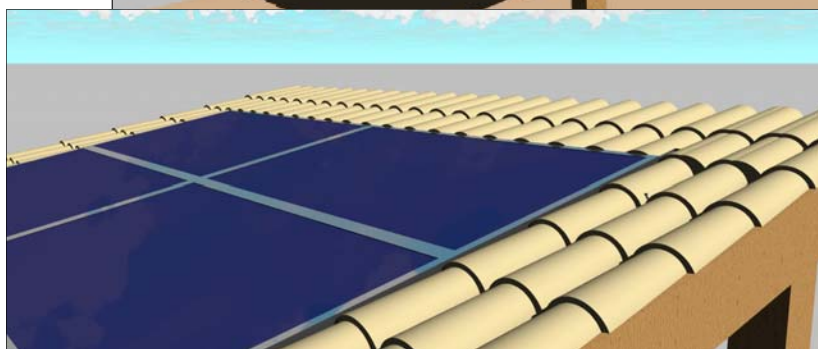
MODERN

Party bike e motorcycle

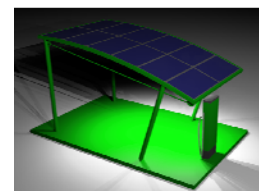


Code	Dimensions[m]	Materials	Modulate	N° of FV panels	Power plant FV [kwp]
EnDeTech-13-001-P9	3,04x3,52x2,50	galvanized steel	Si	6	2,76-3,00





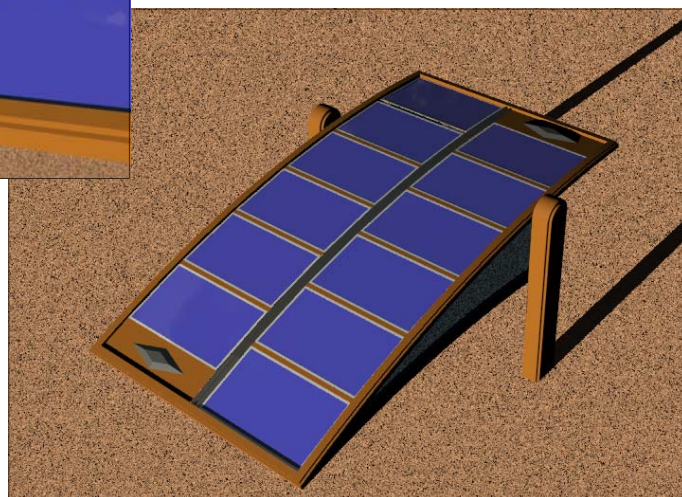
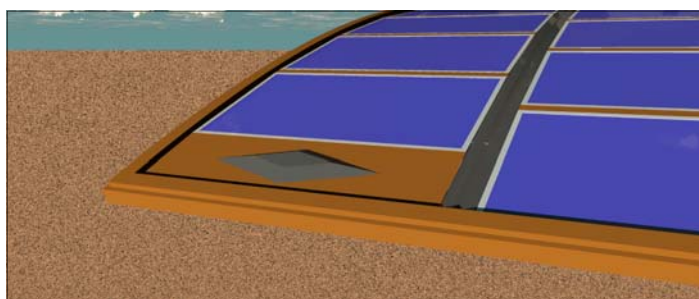
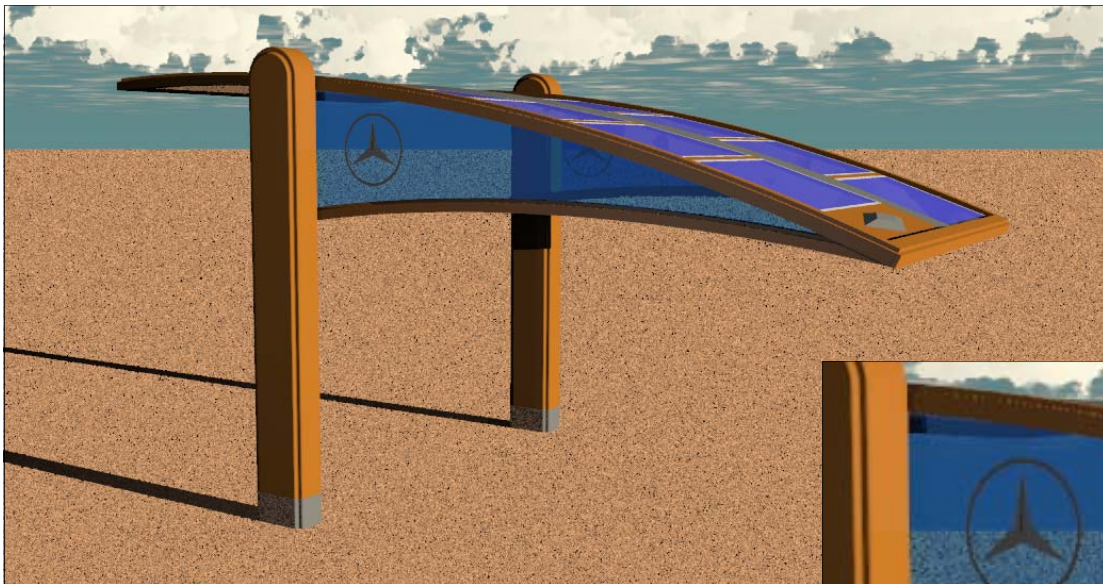
Code	Dimensions[m]	Materials	Modulate	N° of FV panels	Power plant FV [kwp]
EnDeTech-13-001-P10	6,80x4,00x2,50	WOOD	Si	12	2,76-3,00



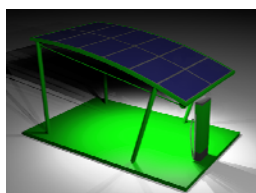


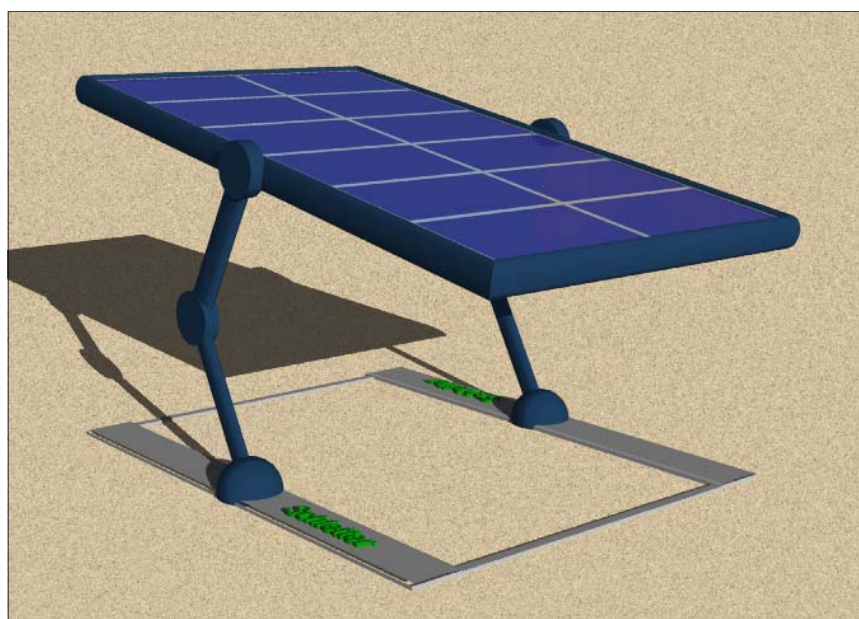
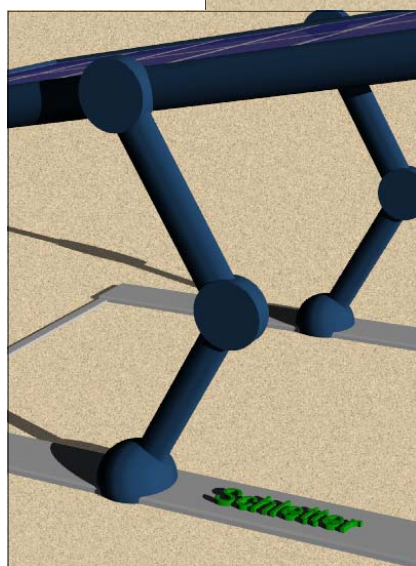
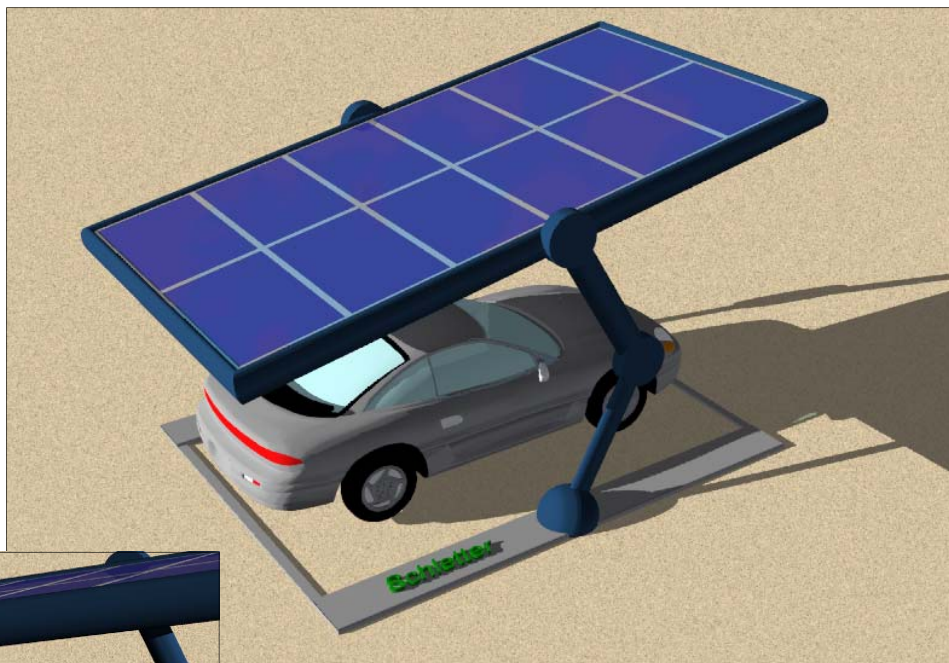
MODERN

Art Dèco

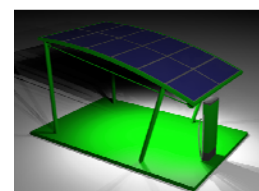


Code	Dimensions[m]	Materials	Modulate	N° of FV panels	Power plant FV [kwp]
EnDeTech-13-001-P11	3,04x6,86x2,50	galvanized steel	Si	6	2,76-3,00





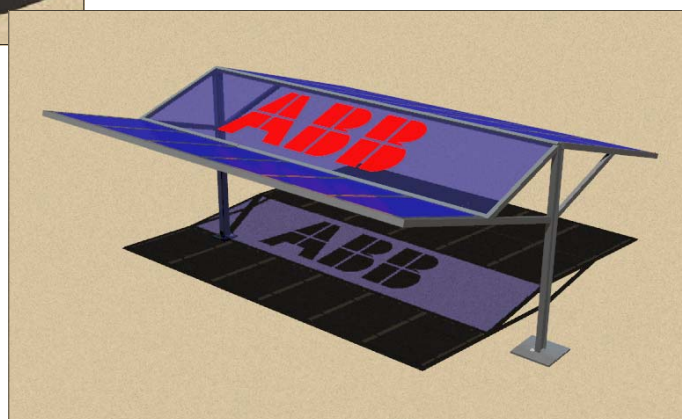
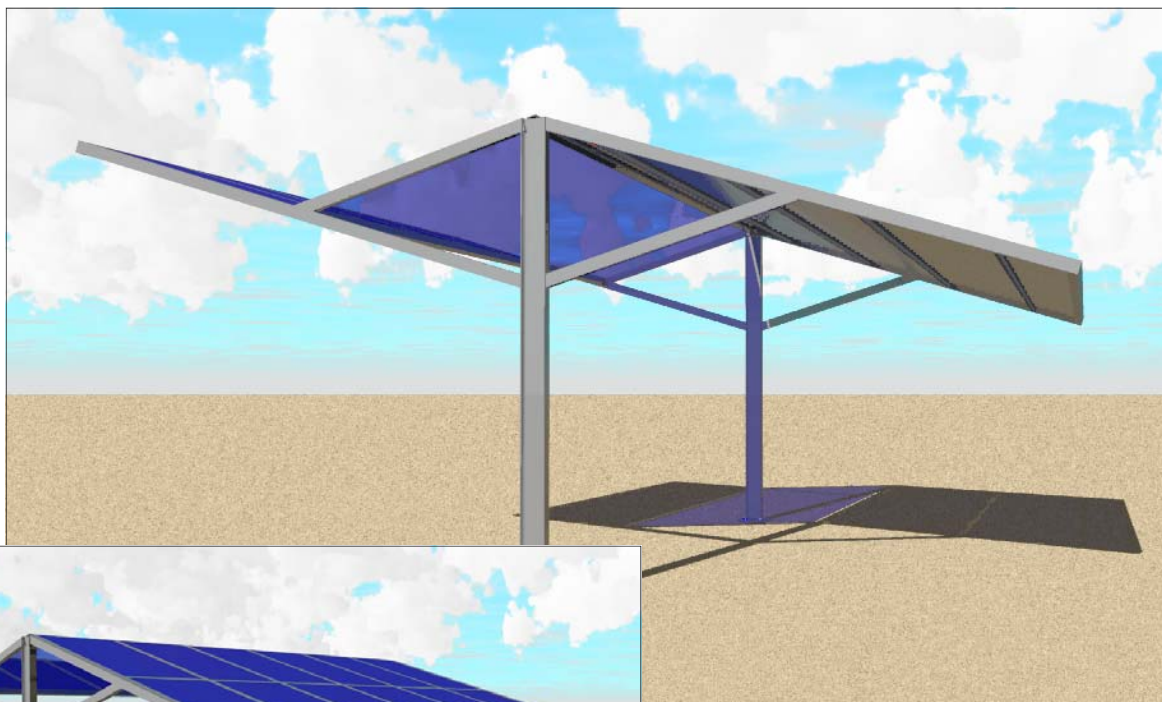
Code	Dimensions[m]	Materials	Modulate	N° of FV panels	Power plant FV [kwp]
EnDeTech-13-001-P12	6,80x4,00x2,50	galvanized steel	Si	12	2,76-3,00



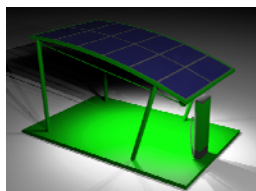


MODERN

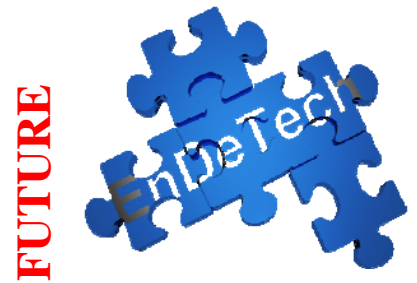
Hector



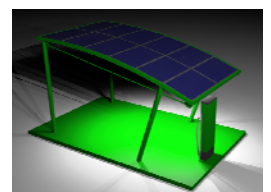
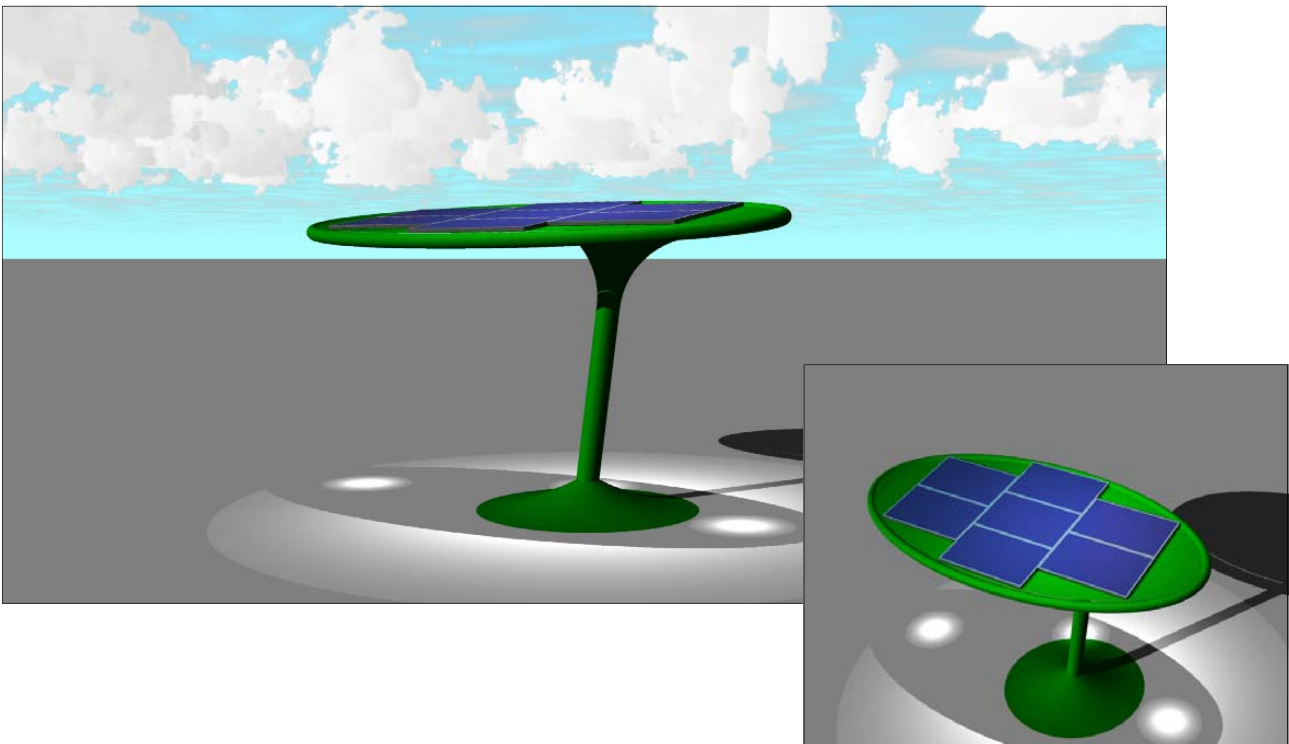
Code	Dimensions[m]	Materials	Modulate	N° of FV panels	Power plant FV [kwp]
EnDeTech-13-001-P13	6,27x6,56x2,20	galvanized steel	Si	18	4,14 - 4,50



FUTURE



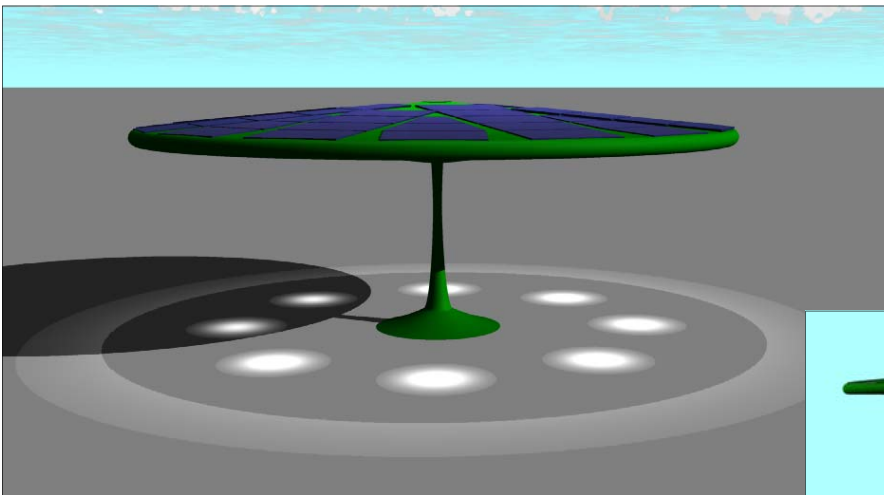
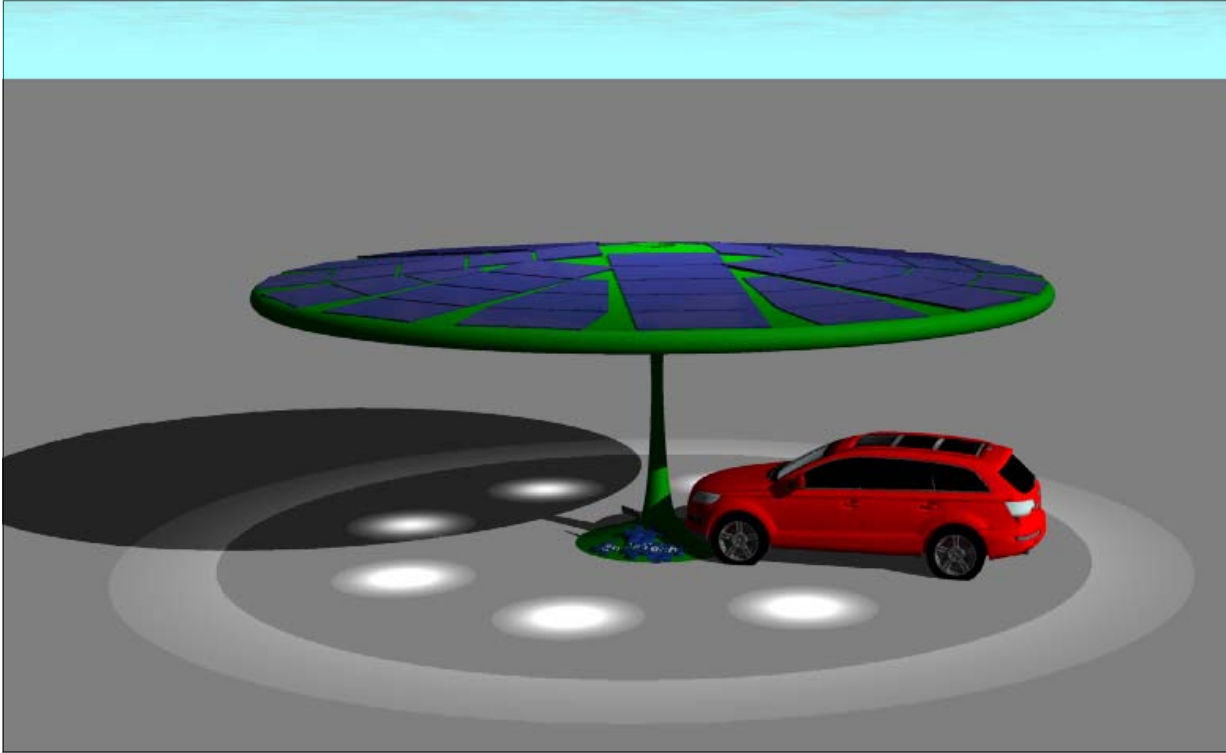
EnDeTech with the style Future, it proposes a coverage for the turned cities to the future, environmentally friendly, with system PV and lamps to lower part led consumption. Future it is the symbol of a coverage that represents a new vision of the cities, where the Green Mobility is the answer sustainable for the future generations.



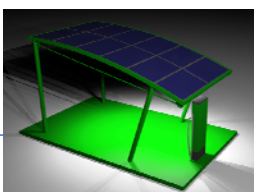


FUTURE

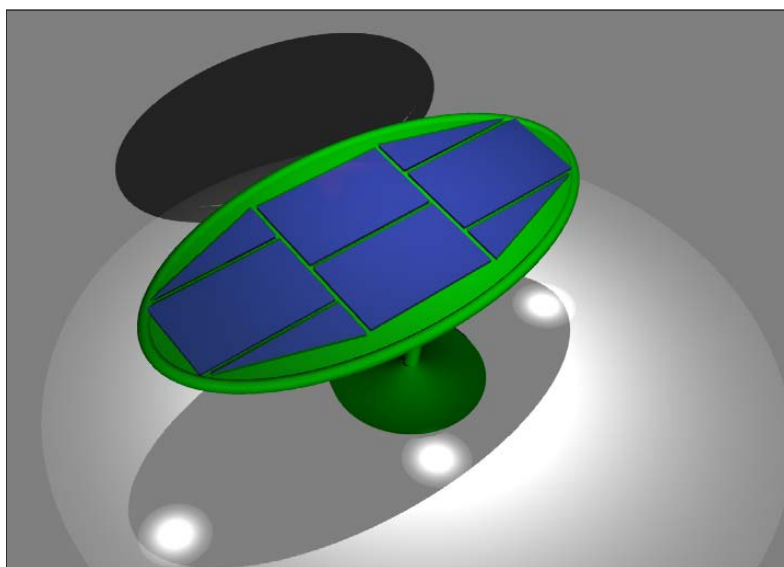
Plaza car



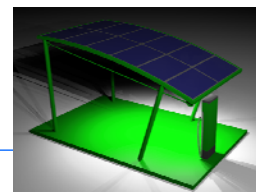
Code	Dimensions[m]	Materials	Modulate	N° of FV panels	Power plant FV [kwp]
EnDeTech-13-001-P13	Diam. 10.,30 h. 4,30	galvanized steel	Si	44	10,12-11,00



Plaza bike e motorcycle



Code	Dimensions[m]	Materials	Modulate	N° of FV panels	Power plant FV [kwp]
EnDeTech-13-001-P14	5,40-2,70 h 2,70	galvanized steel	No	4-7	

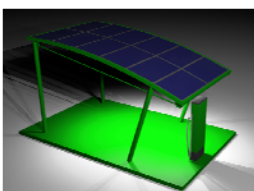
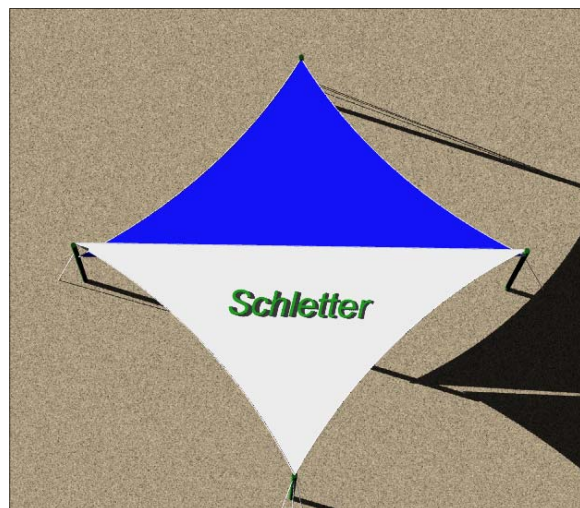
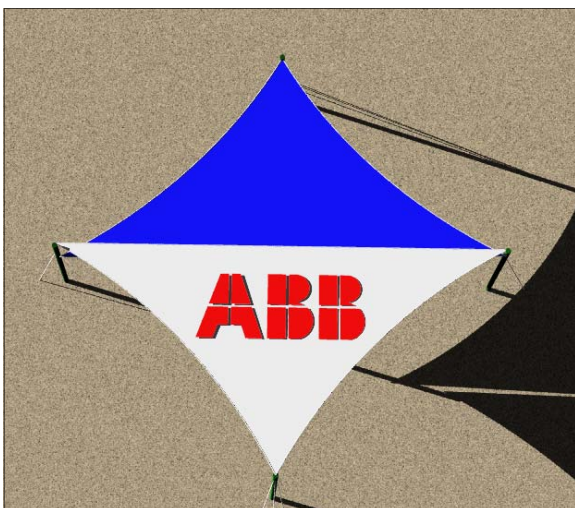
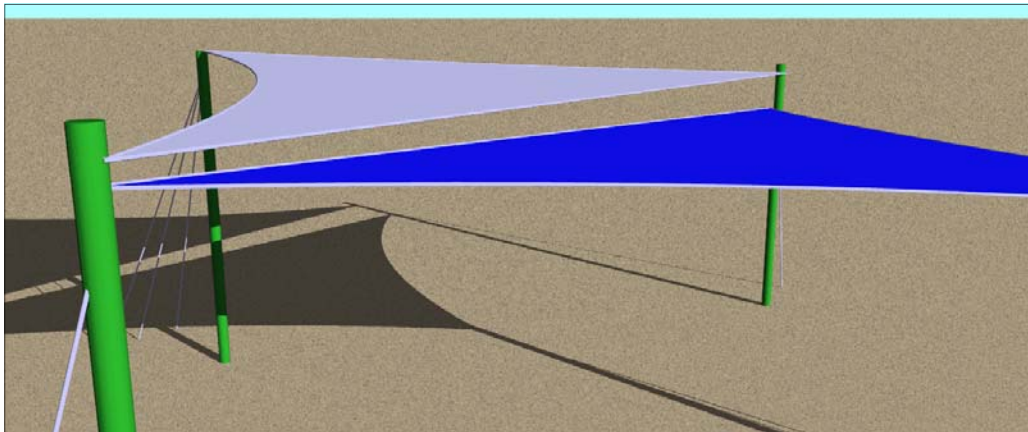


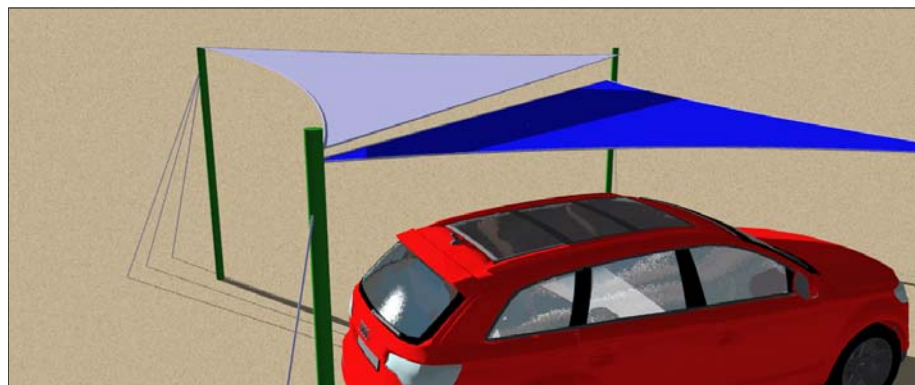
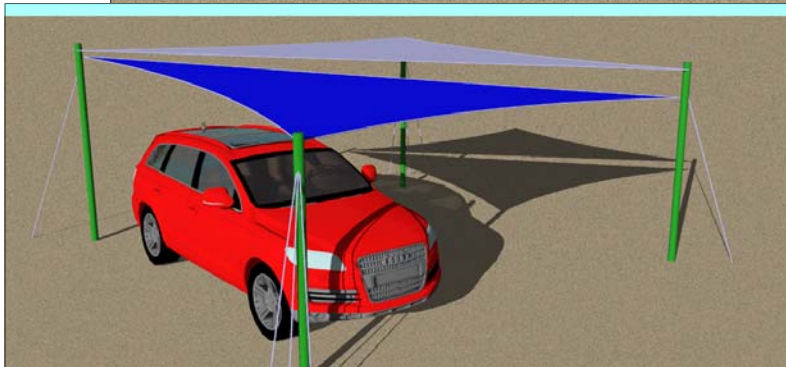
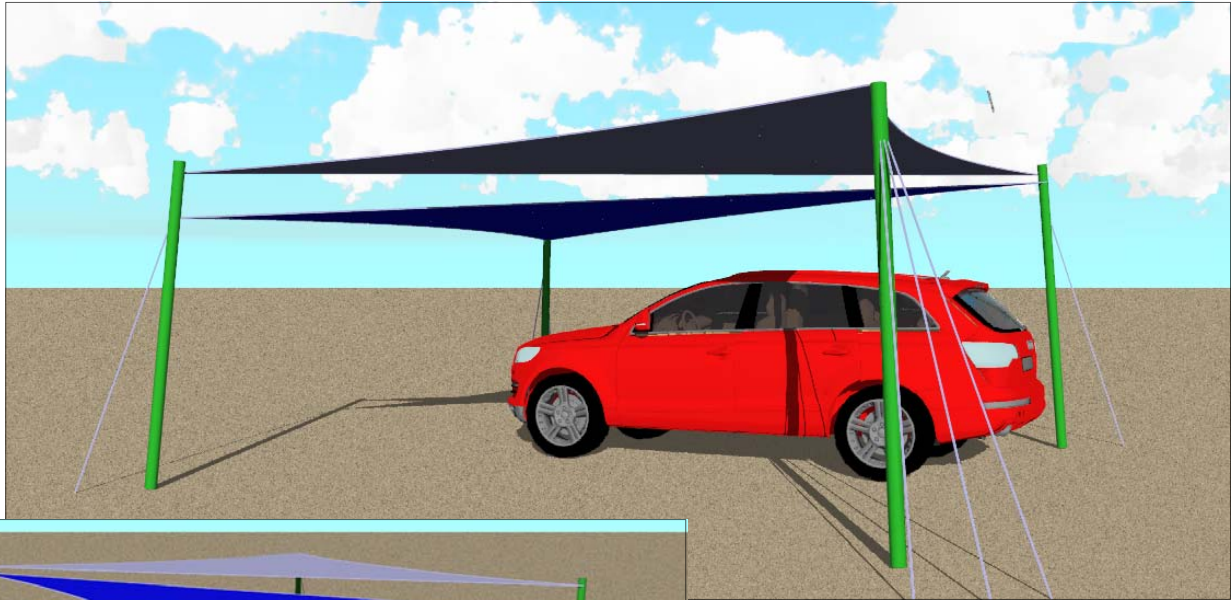


TENSO

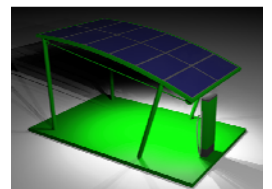
TENSO STRUCTURE

En.De.Tech proposes a new line of tenso structures confirming, also for this typology of coverages, the nonconformist style "En.De.Tech". The cloths are customizable with advertising logos and they are available in different colors





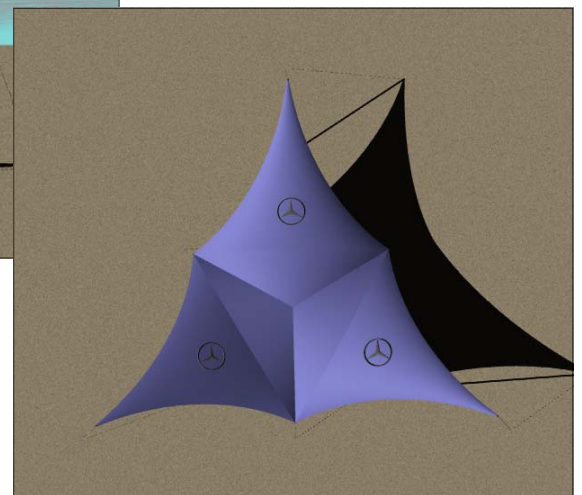
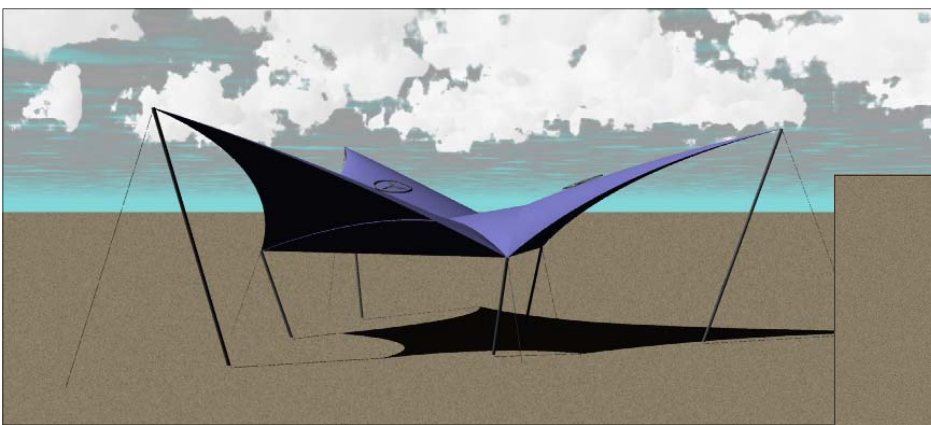
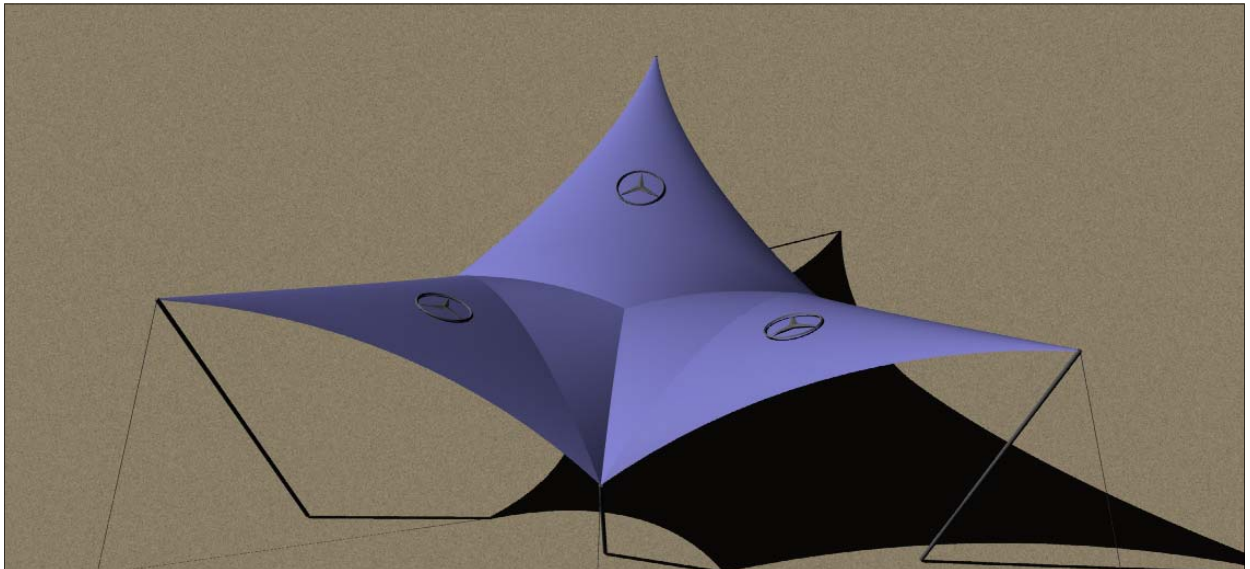
Code	Dimensions[m]	Materials
EnDeTech-13-001-P15	6,00x6,00x 2,90 h max	galvanized steel



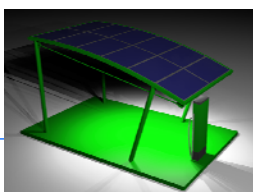


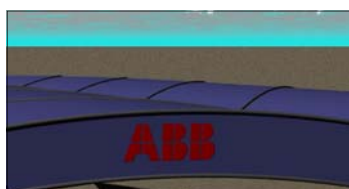
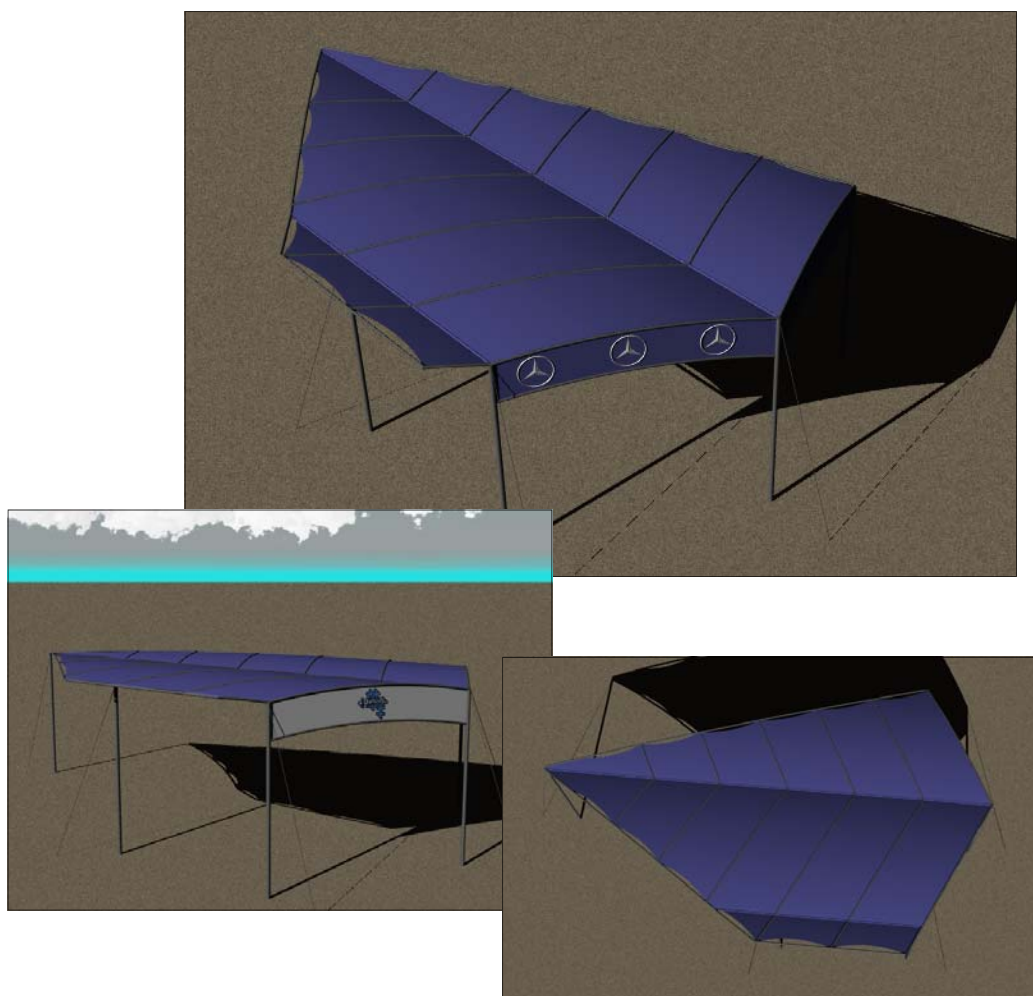
TENSO

Tenso Star

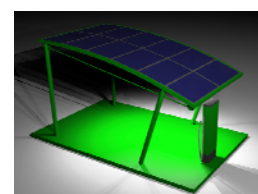


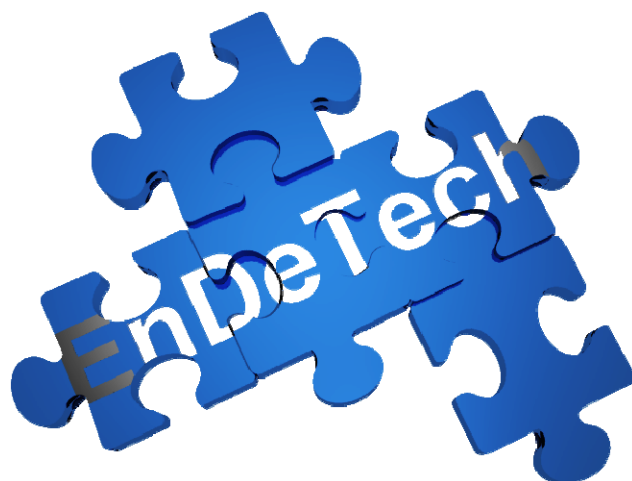
Code	Dimensions[m]	Materials
EnDeTech-13-001-P16	6,00x6,00x 2,90	galvanized steel





Codice	Dimensioni [m]	Materiale
EnDeTech-13-001-P17	16,60x10,70x 4,80 h	Acciaio zincato





Via Piave n° 37, Comiso (RG) Tel.:+39 0932 228112

Fax. +39 0932 246314

Mail: info@endetech.com

Web: www.endetech.com



@

n